

# PeP link



## PePLink Balance 700

The flagship of the PePLink Balance Series, PePLink Balance 700, addresses the needs of medium to enterprise-sized business and application service provider environments.

Protect Your Business Continuity

[www.peplink.com](http://www.peplink.com)

## Protect your business continuity.

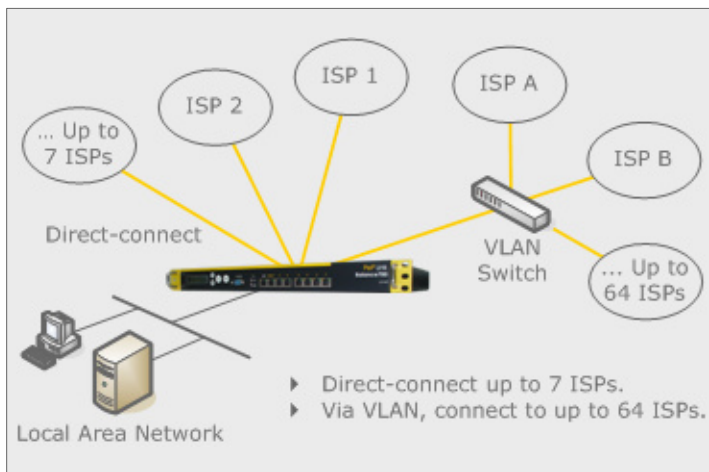
With on-line business communication and transactions being commonplace, reliable high-speed Internet access has become business-critical.



The PePLink Balance series helps protect your business continuity by seamlessly connecting your business to the Internet through multiple independent links, and intelligently managing the links to provide automatic failover and enhanced performance.

Simple deployment and out-of-the-box functionality facilitates a rapid return on investment; compatibility with commonly available and economical types of Internet links, for example Cable and DSL, keeps running costs under control.

## Enhance performance. Increase uptime.



### Enterprise-scale Link Aggregation and Outbound Load Balance

- ▶ Direct-connect up to 7 Internet links.
- ▶ Support for up to 64 Internet links in conjunction with VLAN switches (available via future software upgrade).
- ▶ Bandwidth combination enhances throughput; multiple Internet links provide redundancy and improve network availability.
- ▶ The capability to load balance across up to 64 links meets the current needs and will accommodate future growth.

### Integrated Authoritative DNS and Inbound Load Balance

- ▶ A built-in authoritative DNS server supports MX, NS, A, CNAME, and TXT records and eliminates the need for external DNS servers.
- ▶ DNS resolution balances inbound requests among available links based on traffic load and volume.



### Intelligent Health Checks and Automatic Failover

- ▶ Regular health checks ensure up-to-date link statuses.
- ▶ In case of a link failure, PePLink Balance automatically re-routes traffic to a healthy link to provide continuous Internet service.

### Per-service Load Distribution / Weight Control

- ▶ Outbound traffic can be distributed based on configurable proportions.
- ▶ Proportions among various traffic types can be independently configured according to protocol and port number.

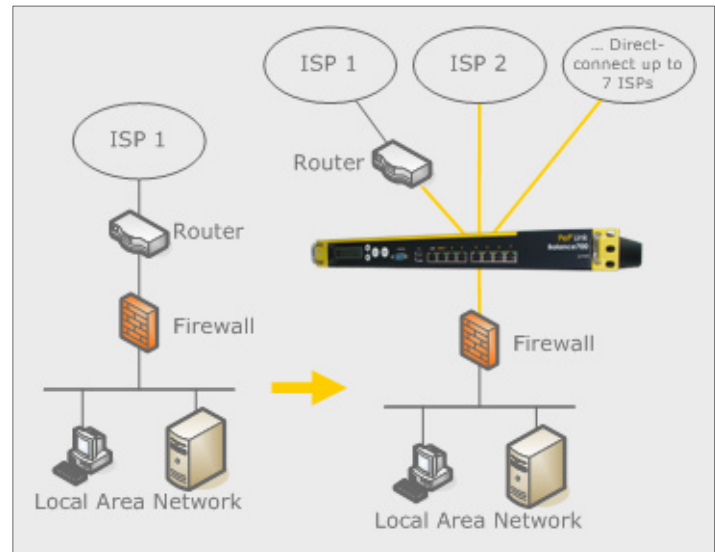
## Install with ease. Rest assured.

### Drop-in Mode

- ▶ With Drop-in Mode, the installation of PePLink Balance does not require any changes in network configuration.
- ▶ Installation of PePLink Balance via Drop-in Mode is best suited for customers with an existing router and firewall.
- ▶ PePLink Balance is “dropped in” between the two existing devices; additional Internet links are subsequently added.

### Hardware High Availability (HA)

- ▶ A pair of PePLink Balance units can be deployed in an Active / Hot-standby HA hardware configuration via VRRP, Virtual Router Redundancy Protocol.
- ▶ In case of failure with the Active unit, the Hot-standby unit becomes active, and provides continuous service.



## Enjoy the benefits.

### Quality of Service for VoIP, HTTPS, and Streaming Video Applications

- ▶ Consistent throughput of audio, video and other delay-sensitive traffic is ensured through prioritized delivery.

### Out-of-the-box support for SIP-based VoIP applications, such as Vonage®

- ▶ PePLink Balance intelligently detects and transparently manages voice sessions across all of the available Internet links.



- ▶ Voice calls become clearer, and sound quality is improved. Enjoy!

### Session Persistence / Binding

- ▶ PePLink Balance supports Internet services, such as secure web, that require clients to maintain the same IP address throughout a session.

# Be in control.

## Web Administration Interface

- ▶ A web-based, wizard and menu-driven administration interface eases configuration.

## On-the-fly Configuration

- ▶ Settings can be changed and activated on PePLink Balance without system reboot.

## Stateful Firewall

- ▶ PePLink Balance provides a rule-based firewall that supports an unlimited number of rules.

## Per-WAN DNS Proxy

- ▶ DNS settings for each Internet link are independently configurable.

## Multiple WAN IP and Subnet Support

- ▶ Fixed IP subnets are fully supported to facilitate leasing blocks of public IP addresses from ISPs.

## Advanced Firmware Architecture

- ▶ 1 GB of non-volatile memory accommodates multiple firmware versions, and provides redundancy to increase firmware upgrade flexibility and reduce risk.

### Functionality and Compatibility

LAN	<ul style="list-style-type: none"><li>• Built-in DHCP Server for LAN Clients</li></ul>
WAN	<ul style="list-style-type: none"><li>• DHCP, PPPoE, GRE, and Static IP</li><li>• Inbound and Outbound Link Load Balance</li></ul>
Routing	<ul style="list-style-type: none"><li>• NAT and IP Forwarding</li><li>• Configurable Static Routes</li></ul>
Security	<ul style="list-style-type: none"><li>• Rules-based Stateful Firewall, with IP Address, Protocol, and Port Filtering</li><li>• DMZ (Demilitarized Zone)</li></ul>
Device Management	<ul style="list-style-type: none"><li>• Wizard &amp; Menu Driven Web-based Administration Interface over HTML SSL</li><li>• Remote Reporting and Management</li><li>• Configuration Upload and Download</li></ul>

### Hardware Specification

LAN Interface	<ul style="list-style-type: none"><li>• 1 Gbps Ethernet Port</li></ul>
WAN Interface	<ul style="list-style-type: none"><li>• 7 Ethernet Ports (3 x 1Gbps, 4 x 100Mbps)</li></ul>
Power	<ul style="list-style-type: none"><li>• AC Input 100-240V</li></ul>
Certifications	<ul style="list-style-type: none"><li>• FCC, CE</li></ul>

### Form Factor, Appearance, and Miscellaneous

Dimensions	<ul style="list-style-type: none"><li>• 1U Rackmount Chassis</li><li>• 426(W) x 379.8(D) x 43.5(H) mm (16.8" x 14.95" x 1.72")</li></ul>
Operating Environment	<ul style="list-style-type: none"><li>• Operating temperature: 0°C to 40°C (32°F to 104°F)</li><li>• Relative Humidity: 10% to 90% (Non-condensing)</li></ul>
Warranty	<ul style="list-style-type: none"><li>• Two-Year Limited Warranty</li></ul>

## About PePLink

Through a diverse offering of wireless and wired broadband Internet products and solutions, PePLink connects people, households, and businesses with on-line information, services, and entertainment.

PePLink continues to innovate and shape the marketplace from its headquarters in Hong Kong, offices in North America, Europe, and Asia, as well as in cooperation with distributors, system integrators, original design manufacturer (ODM) and strategic alliance partners worldwide.

To find out more about how you and your business can benefit from our products and solutions, please visit our website.

[www.peplink.com](http://www.peplink.com)

©2006 PePLink Ltd. PePLink and the PePLink logo are trademarks of PePLink Ltd. Other brands or products mentioned may be trademarks or registered trademarks of their respective owners.

This document does not create any express or implied warranty about PePLink or about its products or services. PePLink's sole warranty is contained in its product warranty.

PePLink has made reasonable efforts to verify that the information contained herein is accurate, but PePLink assumes no responsibility for its use or any infringement of patents or other rights of third parties that may result. The customer is solely responsible for verifying the suitability of PePLink's products for its use.

Specifications are subject to change without prior notice.

**PeP** link

©2006 PePLink Ltd, All Rights Reserved. [www.peplink.com](http://www.peplink.com)